

INTRODUCING DVD - THE NEW DISC IN TOWN

See the most remarkable digital audio and video technology to revolutionize home entertainment

SPECIAL FREE SEMINAR

Thursday, June 19th @ 6:30 pm

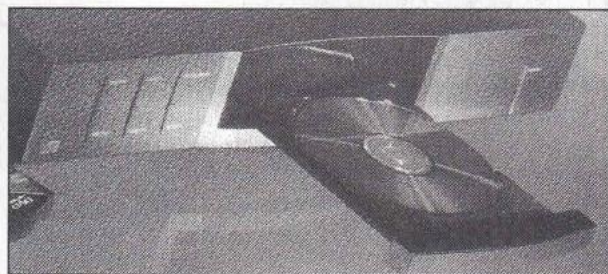


The most exciting new way to experience a movie in your home today is "DVD," also known as digital versatile disc, the revolutionary new 5" disc that's the next generation audio/video format for home theater. A new medium that's an inexpensive, versatile source for both computer and entertainment usage, DVD will radically improve your movie-oriented home theater experience. With up to 500 lines of resolution, DVD picture quality surpasses VHS and laser disc to deliver cinema quality picture and sound. Plus DVD is loaded with interactive menus and features, high-quality Dolby Digital multi-channel audio and more. If you're interested in learn-

 **mitsubishi**
THE BIG SCREEN COMPANY™

ing more about and actually seeing and hearing this great new technology, please join us for a special DVD seminar Thursday June 19th at 6:30 pm. Factory representatives from Mitsubishi will be at The Stereo Shop to demonstrate and explain this exciting new home theater format! Seating at the seminar will be limited, so please call **Bob** NOW at 523-7250 for reservations.

Come early and enjoy refreshments!



SPRING CLEARANCE SALE

Save on Yamaha and More

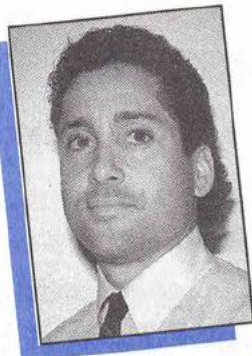
Save up to 70% on floor models, demos and one of a kind items.
Sale prices limited to stock on hand.

CD Player Service Special - Protect Your Investment

Only \$37.50 (regularly \$65.00)! Dirty laser lens and disc transport can impair your compact disc player's performance and reliability. Don't let a dirty lens spoil your listening pleasure and cause premature laser failure. Bring your CD player in during the month of June, our technicians will professionally clean the laser lens, lubricate the transport and check its overall operation. You'll protect your investment and hear better sound. *Offer ends 6/30/97.*

**SAVE
50%**

Presenting DVD



Nicholas Perfita

It is the introduction of DVD - Digital Versatile Disc- here at The Stereo Shop and it is a moment that will define a new age in home entertainment possibilities. DVD is where digital video, digital audio and computing come together, resulting in a superb, higher level of home entertainment quality and possibility. A DVD disc is the same size as a CD and is read by a laser, but that is



where the similarity stops. The DVD provides more than seven

times the data storage of a CD and has a data compression system to use this expanded disc capacity more effectively. Unlike a laser disc player, DVD stores a digital video picture. You will immediately notice the exceptional clarity and brilliance that DVD delivers, with over 500 lines of resolution, more than twice that of VHS. In addition, movies may be presented in choice of aspect ratios to suit your taste. Plus DVD will offer the option of different ratings for blockbuster films. Some day, you'll even be able to choose from a variety of different "cuts" or endings to your favorite films. Of course all that's possible with DVD video needs great audio too and that's where DVD really scores big! Home Theater relies on great audio soundtracks to envelop the viewer and bring the action to life. That's why DVD adopted the Dolby Digital (AC-3) Surround Sound format for the audio standard. AC-3 delivers crisp digital sound with six discreet channels of audio. Individual channels are provided for left front, center, right front, left and right surround and a dedicated subwoofer. It's no wonder that audio manufacturers have been scrambling to bring AC-3 compatible products to market, what with DVD offering the ultimate in video and sound

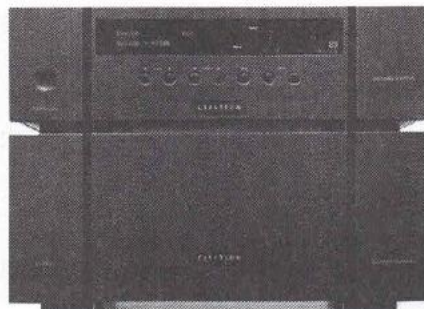
for home theater applications. Please join us in welcoming DVD and Dolby Digital to The Stereo Shop. Once you look and listen I know you'll be glad DVD is finally here!
Mitsubishi DVD players start at \$599.00

A Great Picture Deserves Great Sound

I can't tell you how excited I am with the new Citation 7.0 system! The Citation home theater system is brand new!. According to all the reviews and our own testing, it's a big winner, and

CITATION

we are very excited about offering it to you. Essentially, the Citation system includes a preamp/processor on one chassis (Model 7.0), a choice of two separate four-channel amplifiers (Model 5.1 or 7.1), and a choice of home theater speaker systems (either 5 or 7



series). The control unit is really an ultra-high quality preamp with the Fosgate-designed analog processor circuitry for best theater sound. The amplifiers are beefy and powerful (both over 600 watts), and the speakers are capable of delivering some of the best movie and music sound available. Citation's proprietary 6-Axis mode, with six detector points, as opposed to the standard four, delivers stunning realism from both surround encoded home theater programs as well as conventional stereo recordings. The rear speakers in particular are remarkable for their dual drive technology, which creates the most life like and enveloping surround effects of any system I've heard to date. In short, this is a home theater system of the highest caliber. It is not inexpensive, but this really is an extremely high-quality system that is

built to thoroughly entertain you and last for many years. Plus it is simple, easy to use, and offers absolutely incredible performance! Come in and prepare to be amazed!

The Heart of any Home Theater - The Big Screen Television

Many factors combine to make a good TV - picture quality and user convenience. Mitsubishi is the choice of people in the know. That's why they are known as "the Big Screen Company". Offering sets as large as 80", Mitsubishi rear projection set have improved dramatically over the years, to where they



rival the picture quality of a tube television. Here at the The Stereo Shop we have on display both the 70 inch and 50 inch models. You will find both these models absolutely thrilling to watch when viewing a wide-screen movie, no squinting here! Stereo Shop customers experience the best picture quality from their rear projection sets since every set is custom converged in your own home



for optimum picture quality. We don't just drop your set off. For those who prefer a tube model, Mitsubishi is still the only company to offer a 40-inch tube set. Mitsubishi giant 40-inch sets deliver the highest quality picture with a screen size rivaling that of a big screen projection television. Mitsubishi 40-inch tube models incorporate the high-end features you would expect to find in a discriminating Home Theater System. Check out our sale listing on page 7 for great savings on demo models.

Nicholas Perfita

PS: Don't miss our DVD seminar on June 19th. Meet factory representatives from Mitsubishi. They'll answer all your questions about Mitsubishi televisions and DVD.

McIntosh – Integrity and Innovation

Thousands of McIntosh owners worldwide have described McIntosh products with one word, Quality. Throughout its history McIntosh has remained dedicated to a philosophy of producing only the highest quality audio equipment. At McIntosh, whose record of technological innovation is unsurpassed in the American audio industry, the concept has always been the same – build to a standard, not a price. It was the right idea in 1949 and it's still right today.



McIntosh Amplifiers – Proven Technology The **MC-150** power amplifier represents an outstanding value in McIntosh technology. With McIntosh's exclusive Power Guard circuitry, which eliminates harsh "clipping" distortion without sonic side effects, assures your listening pleasure and protects your loudspeakers from damaging distortion. Plus McIntosh's unique output autoformers enhance amplifier performance by providing optimum loading of output devices and contribute to long, consistent performance with far greater reliability. A beautifully finished glass front panel features McIntosh power meters that are more than just decoration. Extremely accurate, these meters indicate the true power that the amplifier delivers to your loudspeakers. With a conservatively rated 150 watts per channel, the MC-150 lays a firm foundation for a first class audio system.
Reg. \$3,000.00 Save 20%! - Now \$2,400.00 (limited quantities)



McIntosh Control Centers – The World's Finest

McIntosh provides a variety of control center models to meet your needs ranging from pure audio to audio/video home theater. While the various models of McIntosh control centers provide different levels and types of control features, they all share the same design concepts and sonic

integrity. The McIntosh **C-712** features the latest in advanced technology and design. Electromagnetic switching, impervious to atmospheric contamination or degradation, provides input selection and signal routing that is absolutely silent in operation. Select grade components are utilized throughout



the audio signal path, managing audio signals without adding noise or distortion. The **C-712** is a great choice for an audio only system. Add a built in Dolby surround processor and an AM/FM tuner and you have the **McIntosh MX-118**, a superb audio/video control center. There are no compromises in a McIntosh combination component, they provide traditional McIntosh performance in a more compact, space saving configuration. McIntosh control centers achieve a measure of sonic purity and performance goals with a degree of excellence that preserves their reputation as the world's finest.
C-712 \$ 1495.00 MX-118 - Save \$500.00!
- Now \$2,495.00 (limited quantities)



McIntosh SL loudspeakers – outstanding performance

McIntosh SL series loudspeakers are designed to deliver audiophile performance in stereo sound applications yet be capable of meeting demands of home theater sound reproduction. The McIntosh SL-4 and SL-6 with their attractive slim-line styling are designed to easily fit any room décor and offer no compromise in audio performance.

McIntosh SL-4 Reg. \$875.00 ea. Save 20%! - Now \$699.00 ea. (limited quantities)

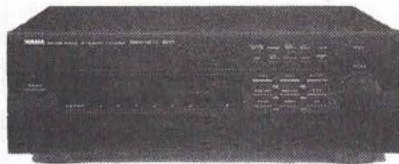


Bob Dacundo

Breaking news in the home theater field centers around the new technologies DVD(Digital Versatile Disc) and Dolby Digital Surround/AC-3. Home theater audio has now broken the sound barrier to move at the speed of data itself. Digital processing is at the core of both of these new technologies and its related components. Leave it to digital specialists Yamaha to keep pace with the data revolution. Yamaha, one of the leading manufacturers of microprocessors, is charting a new course in home theater innovation and control with their exclusive

YAMAHA

Digital Sound Field Processing and Cinema DSP technology. Anyone who has used a computer knows that software can be as important as the hardware. The same is true of home theater equipment, but to take full advantage of the software innovations you need compatible equipment. Look no further than the new flagship **Yamaha RX-V2092** for an A/V receiver that features Dolby Digital decoding circuitry



and interfaces with DVD to anchor your home theater applications. If you want an all-in-one home theater component with the new Dolby Digital/AC-3 format that is also easy to use, the **RX-V2092** is just the ticket. This is a 500-watt 7-channel powerhouse with multi-room audio/video outputs and a

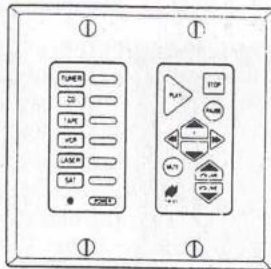
second remote for two zone operation. Now it is possible to listen to music in one part of your home while your family enjoys home theater in another. Exclusive Yamaha DSP modes, along with Dolby Digital/AC-3

CINEMA DSP Tri-Field

bring you the best in movie surround sound performance. Dolby Digital/AC-3 features the five main discrete channels - left, right, center and "stereo" surround - but also provides a sixth discrete bass channel to be fed to a subwoofer. The resulting effect is far more realistic sound both for movies and music. In addition, this is the format chosen to be featured on future HDTV (high definition television) broadcasts, DVD's, laserdiscs and digital videotapes.

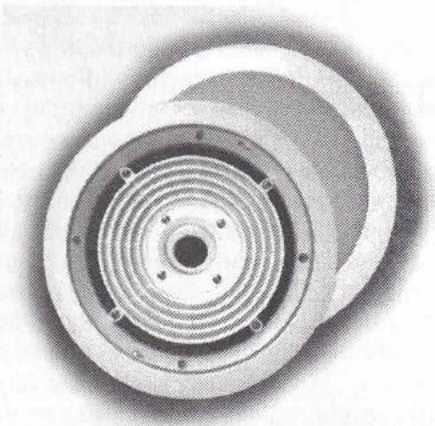
In custom system design I receive many inquiries regarding remote control and ease of use. True one button control of complex A/V systems has always been a dream until now. A new wall mounted keypad controller by **Niles** called the **Intellipad** is the answer. With the Intellipad, system control is as easy as turning on a

NILES



light switch. Source select keys choose the equipment you want to control, function keys operate independently for each source selected, and volume control keys adjust the volume. Plus the Intellipad also learns commands from your hand-held remotes, but unlike your remotes, can never be misplaced! Just think, now you can tune in to "Morning Edition" even before you make the coffee.

We can install any kind of speaker system you like in your home, but what if you don't want to see them? We have all kinds of in-wall speakers, including Boston Acoustics and B&W, and are very excited about our latest, the **Speaker Craft 8.5 MIT**. This is the first high end, in-wall speaker that rivals most floor standing speakers! It features front mounted independent bass, midrange and treble adjustment switches. You can also pivot the midrange and tweeter to direct them towards the "sweet spot" in any listening area. The 8.5 MIT comes with the Acousta Cell, which when installed in the wall cavity behind it, forms a precision sonic chamber. This blend of sound absorbing materials blocks sound



SpeakerCraft® Custom Round Series

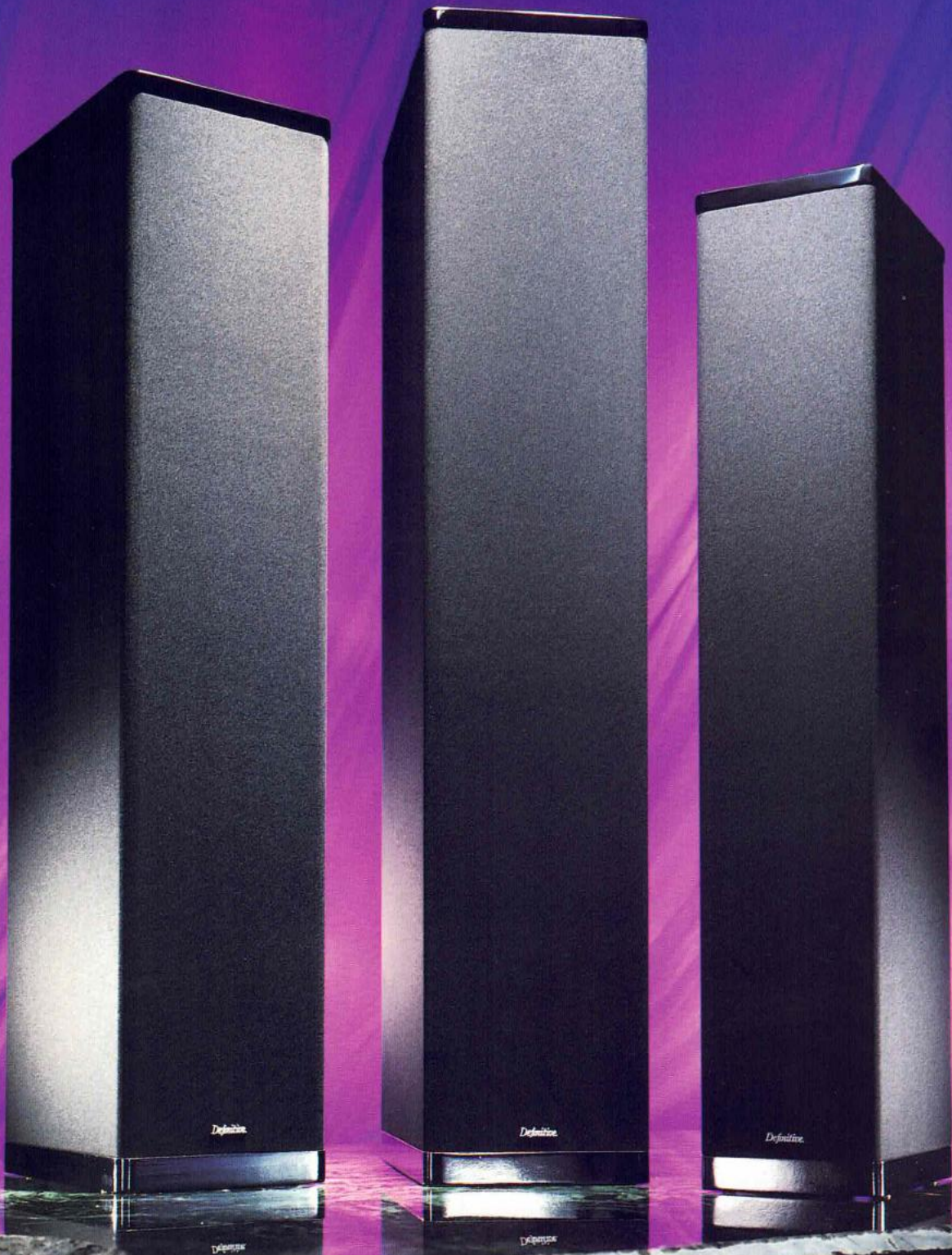
passing through the drywall, dampens resonance, and dissipates back waves. The result is an in-wall speaker tour de force! We also carry outdoor speakers for your patio or backyard by Boston Acoustics and Stereo Stone, I am always available to work with you or your designer in creating a custom-designed home theater or multi-room installation that reflects your vision and taste and integrates perfectly with your living space, lifestyle and decor. Please call for an initial consultation at our expense. I look forward to meeting you.

Bob Dacundo

Bob Dacundo

Definitive's Revolutionary Bipolar BP 8, 10 & 20 Are an Extraordinary Sonic Triumph!

"Truly outstanding" — Stereo Review



Definitive Technology®

Definitive's Extraordinary Bipolar Loudspeakers

Audiophile Performance, Designer Styling, and Unmatched Value

Definitive Technology's BP 8, 10 and 20 are revolutionary new audiophile engineered, designer styled loudspeakers intended for musical reproduction and home theatre systems of the highest quality. These full-range bipolar (front and rear) radiating systems combine the lush spacious soundstaging, lifelike depth-of-field, razor-sharp resolution and pinpoint imaging of the finest dipolar panel loudspeakers with the extended bass response, high-efficiency, wide dynamic range and easy-to-position convenience of the best conventional box systems.

"A new quality performance standard for music and home theatre reproduction."

Definitive Technology®

The goal of the Definitive design team was to create state-of-the-art loudspeakers which offered unsurpassed sophisticated technology and lifelike musical and cinematic reproduction combined in sleek and stylish designs which could be easily and attractively placed in a beautiful home environment. Their success in achieving these goals is immediately apparent when you listen to your favorite music or movie through Definitive speakers. The elegant slender towers seem to disappear in a huge natural soundstage which extends in a three-dimensional arc beyond the speakers from left to right, and exhibits front to back depth which, at times, can be almost startling in its ability to recreate the illusion of live music or cinematic action being performed in your room (which will seem to be almost magically expanded in size).

Thousands of man-hours of critical listening, design processes utilizing the most advanced computer loudspeaker development programs available and proprietary engineering investigations at the NRC in Ottawa, Canada (the world's most advanced loudspeaker research facility) have combined to produce loudspeakers like no other in the world. The spectacular three-dimensional imaging, awesome deep bass response and silky smooth high definition linearity of the Definitive Technology BP 8, 10 and 20 are the result of the utilization and integration of a myriad of technological advancements and breakthroughs which have been combined to create unmatched instruments for the reproduction of music or movies in your home.

The Sonic Superiority of Full-Range Bipolar Loudspeakers

The BP 8, 10 and 20 all incorporate two complete sets of drivers located on both the front and rear baffles of their enclosures. In effect, each Definitive bipolar loudspeaker is two complete speakers in one, one facing forward and the other facing to the rear. Thus, like a dipolar planar loudspeaker, the BP 8, 10 and 20 radiate the full sonic spectrum both forwards and backwards. This provides the listener with a lifelike balance of early-arrival sound information (which provides focus, clarity and location data), and properly delayed late-arrival information (which conveys the lush three-dimensional soundstage of a live music or cinematic performance).

Because the front and rear soundwaves produced by the BP 8, 10 and 20 are in phase, they do not cancel each other in the deep bass frequencies (as is the case with dipolar planar loudspeakers), and so, natural and authoritative low bass is produced without the need for a subwoofer. In fact, the three-dimensional quality of the bass produced by the BP 8, 10 and 20 is unmatched in its musically lifelike naturalness by any conventional system because of the added benefits of bipolar radiation.

Monocoque, Non-Resonant, Low-Diffraction Cabinets

The cabinet of a loudspeaker plays a large part in its sonic performance. Diffraction, or the secondary radiation of sound caused by cabinet edges, grill frames and other protrusions, colors the sound of a loudspeaker and imparts a boxy coloration. The design of the BP 8, 10 and 20 reduces diffraction to an absolute minimum by flush mounting drivers on extremely narrow baffles with radiused edges, which are covered by a frameless grill "sock."

In addition, the resonant vibration of a loudspeaker's cabinet walls and baffles also imparts unwanted coloration. The Definitives' monocoque cabinets are constructed of dense fiberboard with 1" thick mediate front and rear baffles and additional internal H braces. This almost virtually eliminates resonant cabinet coloration which could otherwise interfere with the pure sound produced by Definitive's high definition drivers.

Computer Synthesized Transmission Line Tuning (CSTLT)

Transmission line loading of low frequency drivers has long been acknowledged among critical audiophiles as producing the deepest, cleanest and most uncolored bass response. The construction of a true and properly engineered transmission line is, however, an extremely complex and expensive procedure. Definitive Technology's engineers have developed, with the aid of a supercomputer at a major Eastern university, a new bass tuning program which basically duplicates the loading of a transmission line (in terms of extended bass response and ideal transient behavior) in a much more elegant and cost-effective cabinet construction.

Multiple High Definition Cast-Magnesium Basket Drivers

The BP 8, 10 and 20 all utilize multiple high definition cast basket bass/midrange drivers for significant performance advantages in the areas of bass reproduction, lifelike midrange clarity and dynamic range. These sophisticated bass/midrange drivers incorporate deeply drawn mineral-filled homopolymer cones, combined with butyl rubber surrounds and dustcaps, high temperature vented voice coils and massive magnet structures. This combination of features assures high definition, superb transient response, high efficiency, high power handling and extended bass response. In addition, they are assembled utilizing an aerodynamically designed, magnetically inert, cast-magnesium basket to minimize internal reflections off the back of the cone and preserve structural and magnetic integrity under all conditions.

Moving Coil Multi-Damped Dome Tweeters

The moving coil dome tweeters incorporated in the BP 8, 10 and 20 are of a unique design. Definitive tweeters are constructed with special damping which lowers and better controls the low frequency resonance of the tweeter. The superior damping of the dome's movement throughout its range also results in smoother and more extended frequency response, greatly reduced distortion, improved transient response and noticeably higher definition. The use of an aluminum voice coil, high-temperature wire, braided lead-out wires and ferrofluid assures high power handling and superb reliability.

Phase Coherent Linkwitz-Riley Crossover Networks

The crossover network of a loudspeaker is the real heart of the system, as it is responsible for perfectly blending together the sound of the various drivers into a musically seamless whole. The sophisticated Linkwitz-Riley design used in the BP 8, 10 and 20 equalizes the drivers for linear frequency response, as well as compensates for phase anomalies. This preserves the phase coherence, transient response and dynamic integrity of the signal.

Easily Positioned for Superb Sound Throughout Your Room

BP 8s, 10s and 20s are engineered to be easy to position (just 8" to 18" out from the wall) in any listening room or home theatre installation in order to achieve superb sonic reproduction throughout your room. In addition, the special driver topology, as well as wide dispersion, assures a superb panorama of lifelike sound for virtually every listener in a room, no matter where they sit or stand.

Definitive's Extraordinary BP 8, BP 10 and BP 20

The BP 8: Leading experts agree that Definitive's revolutionary bipolar loudspeakers are sonically superior to any conventional speaker regardless of size or price. Definitive's astonishing BP 8 brings the sonic superiority of full-range bipolar technology to a new level of affordability and decorator-pleasing styling and size. Taking up just over 1/2 sq. ft. of floor space, the sleek ultra compact BP 8 incorporates the same technology as its larger brethren. In addition to being a superb front main speaker, the BP 8 also makes an ideal state-of-the-art side or rear surround speaker for the finest home theatre installations.

The BP 10: Considered one of the world's finest loudspeakers, the BP 10, in the words of *The Inner Ear Report*, is "almost too good to be true!" Its combination of full-range bipolar technology, computer synthesized transmission line tuning (for subwoofer-quality bass), monocoque low-diffraction cabinet and Definitive's high definition drivers (two 17 cm cast-magnesium basket bass/midrange drivers and two 25 mm aperiodic dome tweeters) results in a true state-of-the-art speaker of unsurpassed quality and value. It utilizes larger drivers than the BP 8 for fuller, more extended bass response, higher power handling and greater dynamic range.

The BP 20: Definitive's award-winning BP 20 utilizes all the technology incorporated in the BP 10 and combines it with virtual point source coincidentally radiating, symmetrically concentric driver arrays. Each BP 20 incorporates four 17 cm bass/midrange drivers which are arrayed on the front and rear baffles in two concentric pairs, each surrounding an aperiodic dome tweeter. Each pair of bass/midrange drivers creates a virtual point source radiating from a position midway between them, which is coincident with the tweeter location. This symmetrically concentric (or D'Appolito) point source mounting results in further improvements in the areas of driver blending, depth retrieval, lateral imaging and dispersion. Additionally, the use of four bass/midrange drivers extends the bass response below 20 Hz (superior to most subwoofers) with power handling capability exceeding 500 watts. The BP 20 incorporates provisions for bi-amping or bi-wiring.

In 1972, Sandy Gross and two classmates from Johns Hopkins University formed what was to become one of the world's most successful loudspeaker manufacturers.

In 1988, Sandy left to pursue his ultimate dream and create truly world-class loudspeakers dramatically superior in design, technology, sonic performance, construction quality and value to everything which had come before.

Voted #1 for quality and reliability by top industry professionals in a nationwide dealer survey, Definitive Technology loudspeakers are the successful realization of this dream.

"Definitive Technology has hit the bull's eye. . ."

— Stereo Review

Definitive Technology®



Speakers shown in genuine oak finish.

"The best . . . almost too good to be true . . ."

— The Inner Ear Report

Definitive Technology BP 8, 10 & 20 Specifications

	BP 8	BP 10	BP 20
Dimensions	7"W x 11"D x 38"H	9"W x 11 1/2"D x 42"H	9"W x 15"D x 46"H
Frequency Response	22 Hz-28 kHz	20 Hz-28 kHz	18 Hz-28 kHz
Rec. Assoc. Amplification	20-200 Watts/channel	20-300 Watts/channel	20-500 Watts/channel
Efficiency	90 dB	90 dB	90 dB
Nominal Impedance	Compatible with 8-ohm outputs		
Driver Complement	Two 19 mm moving coil dome tweeters; two 14 cm mineral-filled homopolymer-coned, cast-magnesium basket bass/midranges.	Two 25 mm moving coil, aperiodic dome tweeters; two 17 cm mineral-filled homopolymer-coned, cast-magnesium basket bass/midranges.	Two 25 mm moving coil, aperiodic dome tweeters; four 17 cm mineral-filled homopolymer-coned, cast-magnesium basket bass/midranges.
Finish	Wrap around black designer grill cloth (optional white cloth available separately) with choice of genuine oak or piano black lacquer end caps.		
Warranty	5 years parts and labor.	5 years parts and labor.	5 years parts and labor.

Speakers are supplied with an optional spiking kit.

Specifications are subject to change without notice.

The Definitive Bipolar Home Theater System

"the most complete well-rounded audio/video speaker system we've heard"

— Video Magazine

Experts agree that Definitive's award-winning Bipolar Home Theater is the finest available. Its dramatic sonic superiority is the reason it was selected by experts in *Stereo Review* for their home theater "Dream System" and chosen by professionals like the Canadian Broadcasting Corporation for the reference system in their executive screening room.

Bipolar technology goes beyond just putting you in the movie theater and actually puts you in the movie. It provides a realism of sonic reproduction which is unobtainable from any conventional loudspeakers, regardless of price. As *Video Magazine* said, "you literally feel like you're part of the movie." Simply combine a pair of our bipolar front main speakers with one of our precisely tonally matched shielded center channels and a pair of our bipolar rear/side surround speakers plus one or two PowerField™ subwoofers for the ultimate in home theater performance: The Definitive Bipolar Home Theater System. (All our speakers are precisely timbre-matched to each other so any combination will blend together perfectly.)

Video Magazine says that "Bipolar systems are as close as we've come to finding The Holy Grail of home theater." They call Definitive's Bipolar Home Theater System "the most complete well-rounded audio/video speaker system we've heard" and say "it achieves a perfect balance between price and performance." *Video* concludes that Definitive's complete Bipolar Home Theater "does a brilliant job of reproducing both Dolby Surround movie soundtracks and musical performances" and is "a perfect fit for the vast majority of home theater listeners."

Dolby Surround is a trademark of Dolby Laboratories Licensing Corporation.



- Winner of the Prestigious Design and Engineering Award at the International Consumer Electronics Show.
- Winner of *Video Magazine's* VIVA GOLD Product of the Year Award.
- Honored by selection for *Stereo Review's* "Expert's Dream System."
- Winner of *Sound & Vision's* Critic's Choice Award.
- Chosen by the Canadian Broadcasting Corporation for their Reference System.

Definitive Technology®

11105 Valley Heights Drive, Baltimore, Maryland 21117

Stereo Shop Custom Matched A/V Systems

SYSTEM 1



Yamaha RX-V490 Surround Sound Receiver - This is the absolute best home theater receiver value around, with 70x3 watts of power in the L,R,C (20 for surround) and features to make your home theater come alive! Its digital technology puts the sound of a movie theater in your own home. HiFi music modes make listening to your favorite music a whole new experience. Remote control allows you to easily and conveniently control a wide variety of audio components.



Boston Acoustics CR-8 bookshelf speakers One of the new "Compact Reference" bookshelf speakers from Boston Acoustics, The CR-8 takes up less space but delivers—extraordinary performance from its 7" woofer and dome tweeter. The CR series packs dynamics, imaging and controlled bass response into small, solid cabinets that fit anywhere.



Yamaha YST-SW150 Subwoofer - Add thunder to Home Theater with Yamaha's powered dual 8" woofer design. Features a 120 watt amplifier, auto on/off and magnetic shielding for flexible placement.

Boston Acoustics CR-2 center channel speaker - Two way design for excellent localization of on-screen effects and clear intelligible dialog. The compact sizing and magnetic shielding allow for convenient placement atop your television.

Yamaha NS-E60 surround speakers - The perfect surround/effects speaker for people who want their speakers to be heard and not seen. Full range 4" bass reflex design helps create all the depth and excitement you'd find in an actual cinema.

Save 25%! - System Price \$1095.00

SYSTEM 2



Yamaha RXV-590 Home Theater Receiver with Cinema and HiFi DSP - The RX-V590 will drive five channels with high levels of clean power. The front and center channels put out 75 watts of power while the rear channel circuits deliver 20 watts each. Enhanced Dolby Pro Logic and Cinema DSP make movie watching a special experience. Six HiFi DSP modes, 40 station preset AM/FM tuning and remote control enhance your music as well.



Boston Acoustics CR-9 bookshelf speakers - The largest of the "Compact Reference" monitors is still smaller than most bookshelf designs, yet produces as much bass and dynamics as many floor-standing models. With accurate, flat frequency response music lovers want as well as the exciting effects and staging that home theater enthusiasts crave.



Boston Acoustics VR-10 Center Channel - The Digital Dolby ready VR-10 offers clarity and detail in an enclosure small enough to place atop nearly any TV. A three-way design for excellent dispersion that's remarkable for soundtrack dialogue.



Boston Acoustics Micro 80 satellite surround speakers - Boston's latest line of satellite home theater speakers for great sound that is practically invisible. Wall mountable for unobtrusive placement.



Boston Acoustics CR-400 powered subwoofer - A powerful system foundation that adds taut, well-controlled bass to films and music. Perhaps the smallest high-quality subwoofer available, the CR-400 is fully adjustable to your system and produces a remarkable amount of bass with minimal distortion.

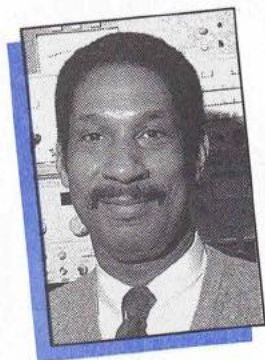
Save 20%! - System Price \$1495.00

GREAT VALUE IN A MINI SYSTEM



Yamaha CX-70 Mini Home Theater System - The Mini System That Makes Movies and Music Sound Awesome. Forget listening to movies through your TV speakers. Connect your VCR to the GX-70 and hear powerful sound through five speakers. Plus The GX-70 has a high performance CD changer, twin cassette deck, tuner and signal processor/EQ. It's also got Dolby Pro Logic and Active Servo Technology to make movie sound come alive. The Yamaha GX-70 isn't big but the sound is. **Save 15%! - System Price \$595.00**

***90 days same as cash on all purchases. Five-year maintenance contracts to protect your investment!**



Richard Cox

Here at The Stereo Shop we are continuously on the search for "High End" audio revelations. Technology will not stand still so I keep a constant lookout for new products that deliver the true high end. Experience counts and I've had plenty, so you can count on me to keep a watchful eye and ear for what sounds "right". Here is just a sampling of what's in store...

A New Acoustic Dimension?

New Acoustic Dimension a.k.a. **NAD** has long been the standard for true high end sound. Here again after a long hiatus and making new friends everyday, a warm welcome back to NAD. With a new line of fantastic

sounding gear we are again proud to recommend NAD for lovers of great sound. In fact I can't think of any product that delivers the bang-for-the-buck sonic "goods" like NAD. Check out their fabulous sounding 314 integrated amplifier and 512 CD player (an updated version of the critics' favorite 502) to hear what I mean.

Rega Planet CD transport/player *New!*

What's that you say? A CD player from a company famous for its turntables? Yes indeed, Rega, the British table manufacturer, long recognized for their value and sonics has stepped into the digital realm with their premier compact disc player. With custom digital circuitry, designed in coordination with Sony and D/A converter chip designer Burr Brown, the Planet provides a smooth, seductive, more analog-like sound all in one box.



Features like top load, digital out and user-friendly remote complete the package. With extra-terrestrial sound, and a down to earth price the Planet belongs in your audio orbit.

Rega Planet CD player \$795.00

A new statement speaker...the Andra *New!*

Finally a speaker that has style and substance. Our latest arrival, the statement loudspeaker from **EgglestonWorks**, the **Andra**, has it all. Here is a speaker that balances detailed highs, open natural mid-range, with firm detailed bass. This speaker gets the dynamics right at low and high volume levels, and handles power like no other we've heard,



EGGLESTONWORKS

exactly the combination we were looking for! Designed from the ground up and utilizing the finest in driver technology, wiring, and a minimal crossover, these 200 pound granite laminated mini-monoliths are a force to be reckoned with. With the Andra, Eggleston has brought accuracy and solidity to the palette of musical color. Do yourself a favor, stop by and bend an ear towards the

Andra, now on display for your audition.

B&W Matrix 802 loudspeakers *Best Buy!*

Loudspeaker manufacturers touting their wares are constantly approaching us, and listening to the competition, I am constantly reminded of an exceptional value in today's high-end



loudspeaker market - the **Matrix 802** from **B&W**. This English

firm has maintained its reputation as an industry leader for some twenty five years, attesting to the success of their design approach. Nowhere is this more evident than the **B&W Matrix 802 loudspeaker**. Utilizing the advanced technology Matrix design, Kevlar drivers and a resonance-free enclosure. Plus its furniture-grade cabinetry and elegant design complement fine decor.

This opens up a world of vivid sonic pleasure to anyone seeking a modestly sized, full range loudspeaker that represents a true value and "best buy" in today's high-end arena. Mated with the likes of Conrad-Johnson, McIntosh, Theta and California Audio Labs the **Matrix 802** has voiced the systems of many of our satisfied customers.

B&W Matrix 802 \$3995.00 per pair



New JVC XRCD format recordings *New!*

With all this great sounding gear about we can't forget the music. For instance, take a listen to our latest demo standard, the new **JVC XRCD** format recordings. Here are some audiophile-quality CD's that really swing. JVC's new technology, utilizing expanded resolution, really rises above the rest. And the music's great too, various jazz and blues artists are featured. These discs are truly the best recordings I've heard to date.

JVC XRCD recordings \$29.95

Richard Cox
'til next time, Richard Cox

The missing link in any system!

Are you still using those "freebie" interconnects that came with your equipment? While they cost practically nothing, their net result upon your audio/video performance is a hefty loss. That's right, poor quality conductor and flimsy connectors sap current... the life blood from your system! Good connections are necessary to maintain current flow and allow maximum performance of your equipment, without any signal degradation. Tributary Audio and Video cables, engineered with top quality conductors, silver solder, and PVC jack-

ets, bring out the best in your system. To ensure maximum performance and value we recommend Tributaries Audio & Video Cables - for quality without compromise.



Starting at \$39.⁹⁵



Mitsubishi's Summer Sizzler Promotion Three Diamond Card Financing Offer on **BIG** Screen Televisions

Kick back this summer and enjoy the view of the big screen.

Purchase a Mitsubishi Big Screen TV before July 7, 1997 to take advantage of this unbeatable offer.

**NO Down Payment, NO Monthly Payments, NO Interest,
NO Accrued Interest for 12 Months.**

stereo shop
audio/video interiors

Newsletter of The Stereo Shop, Inc.

505 Farmington Avenue, Hartford, CT 06105
(860) 523-7250

Store Hours:

Mon.-Wed.-Fri. . . . 9-6

Thursday 9-8

Saturday 9-5

Closed Monday's in July & August

Bulk Rate
U.S. Postage
PAID
Hartford, CT
Permit No. 1355

McIntosh • Conrad-Johnson

Yamaha • Adcom

Definitive Technology

B&W Loudspeakers • Canton

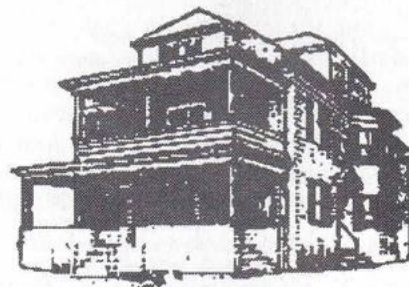
Boston Acoustics • Velodyne

Cal Labs • AudioQuest

Tributaries • Sharpvision

Mitsubishi

Or Current Resident



Knowledge • Quality • Experience